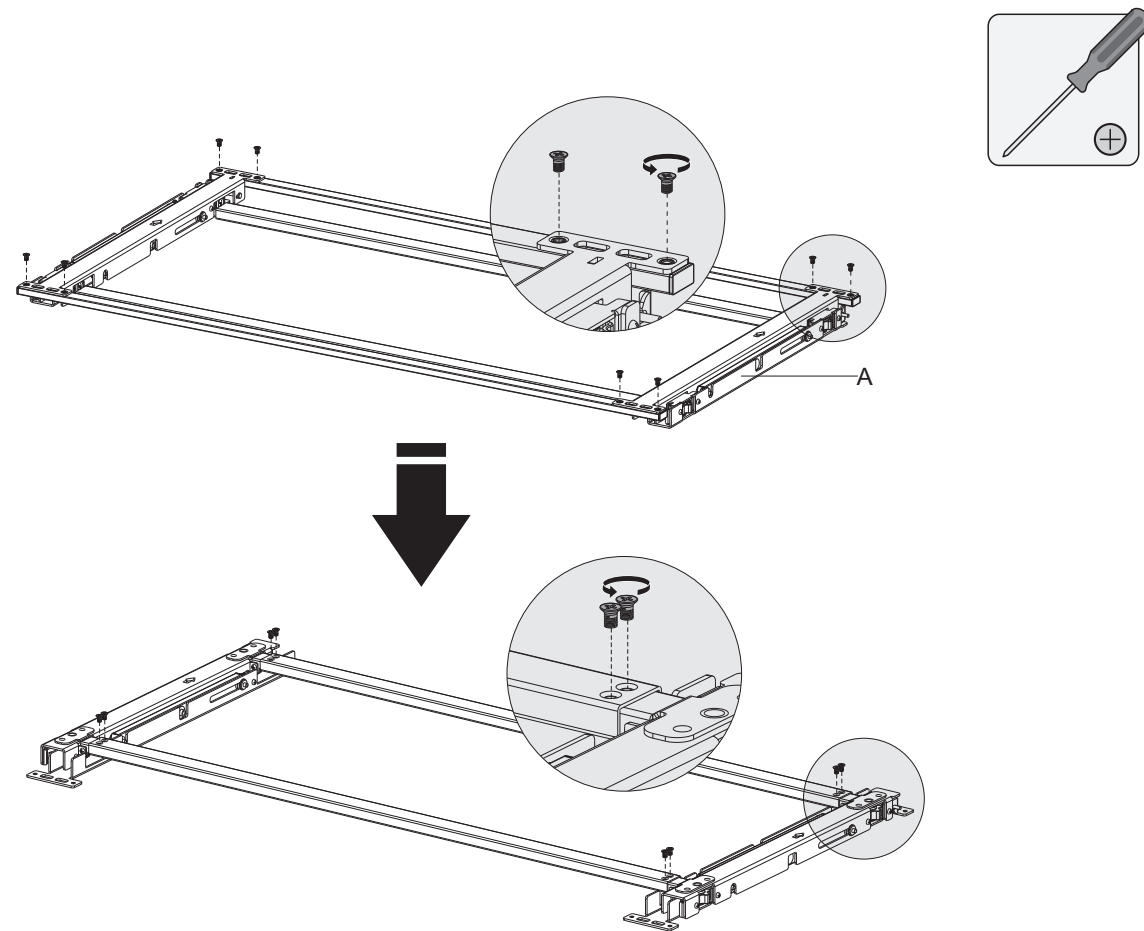
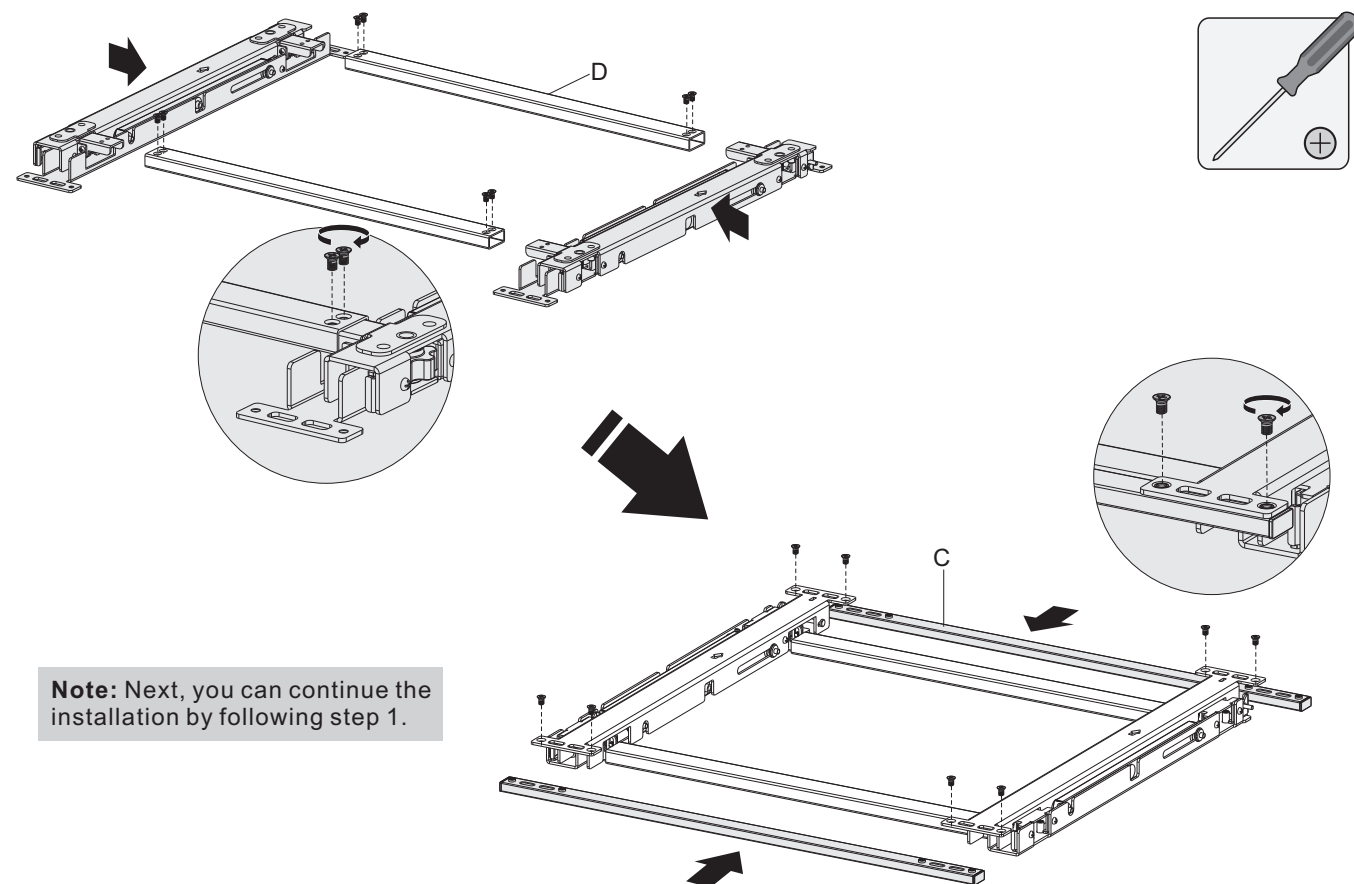


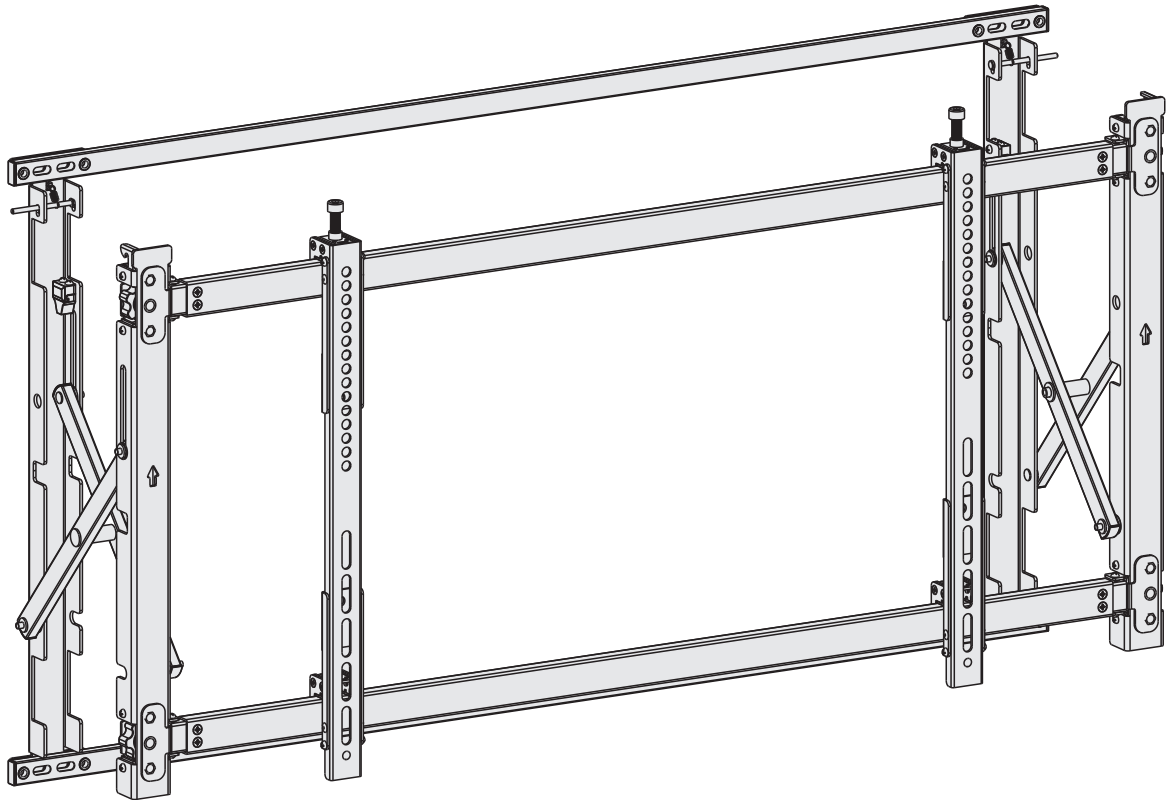
13. Remove the Screws



14. Connect Tubes and Rods



Video Wall Mount



INSTALLATION MANUAL

LVW09-46T



200x200/300x200
300x300/400x200
400x300/400x400
600x400



rated

35kg/77lbs

LVW09-68T



200x200/300x200
300x300/400x200
400x300/400x400
600x400/600x600
800x400/800x600



rated

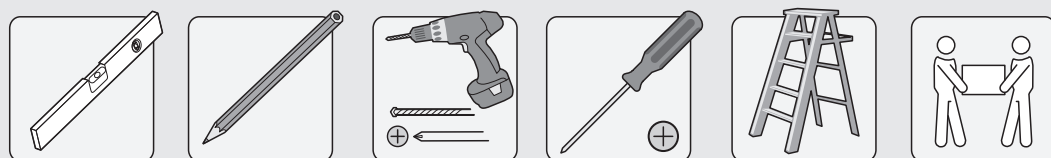
35kg/77lbs

 **Read the entire instruction manual before you start installation and assembly. If you have any questions regarding any of the instructions or warnings, please contact your local distributor for assistance.**

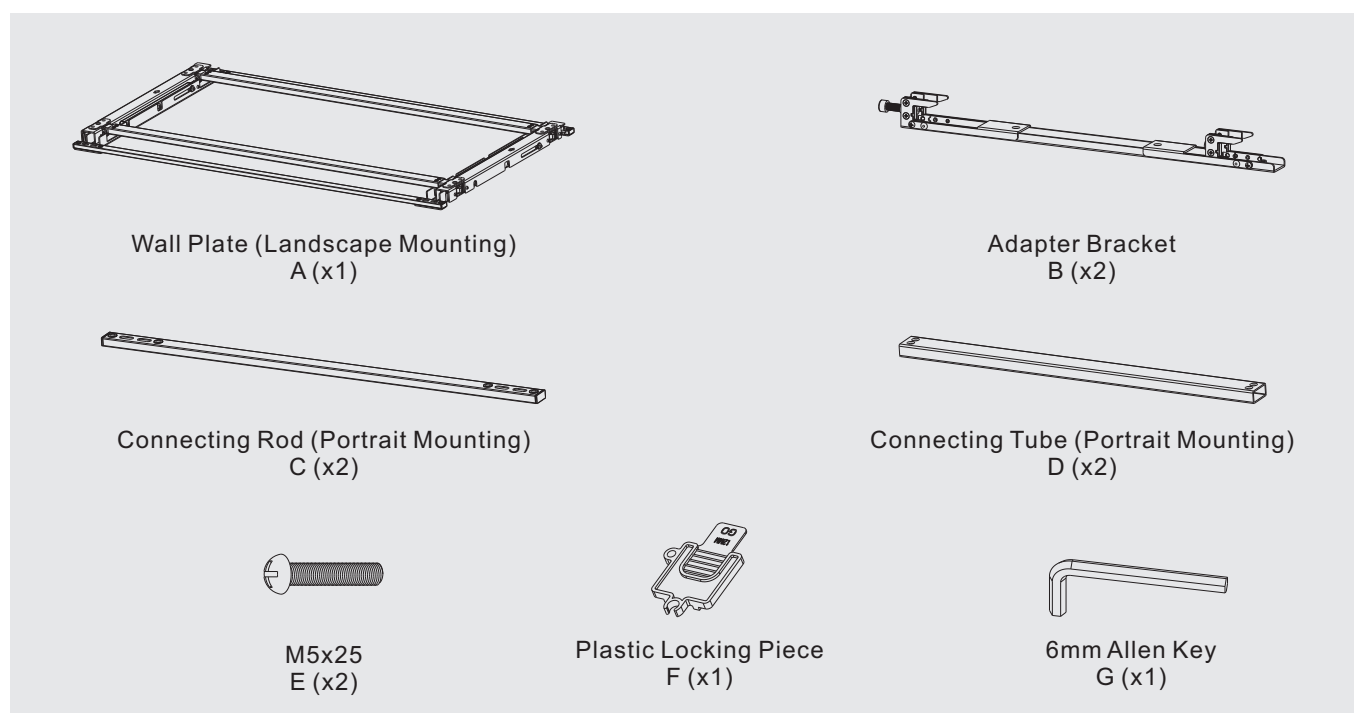
CAUTION

- Use with products heavier than the rated weights indicated may result in instability causing possible injury.
- Please closely follow the assembly instructions. Improper installation may result in damage or serious personal injury.
- Safety gear and proper tools must be used. This product should only be installed by professionals.
- This product is designed to be installed on solid concrete walls or masonry walls.
- Make sure that the supporting surface will safely support the combined weight of the equipment and all attached hardware and components.
- Use the mounting screws provided and **DO NOT OVER TIGHTEN** mounting screws.
- This product contains small items that could be a choking hazard if swallowed. Keep these items away from children.
- This product is intended for indoor use only. Using this product outdoors could lead to product failure and personal injury.

Recommended for Installation

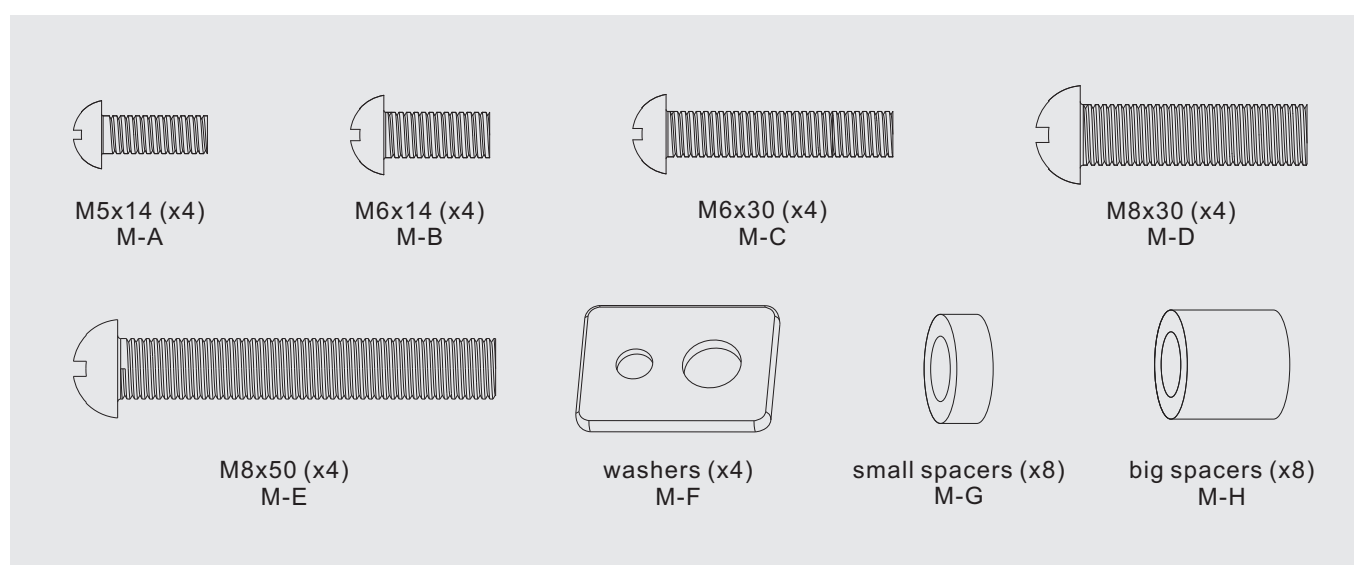


Component Checklist

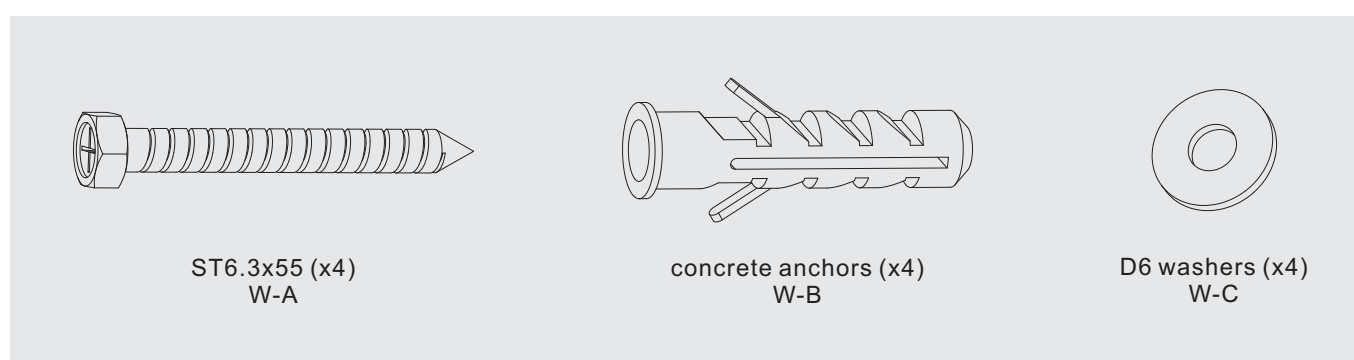


IMPORTANT: Ensure that you have received all parts according to the component checklist prior to installation. If any parts are missing or faulty, contact your place of purchase for a replacement.

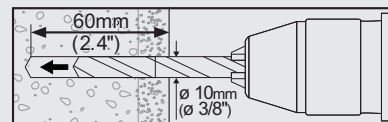
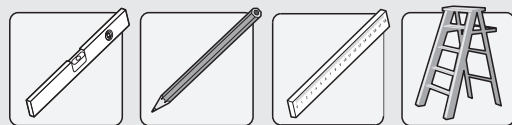
Package M



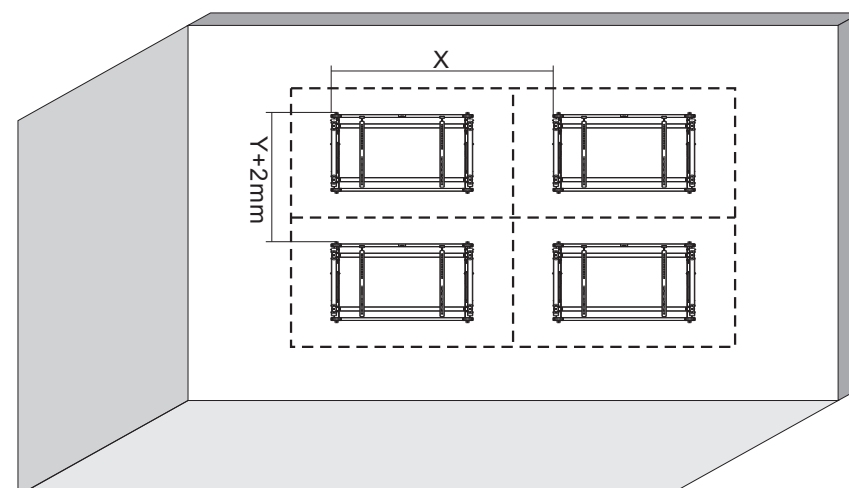
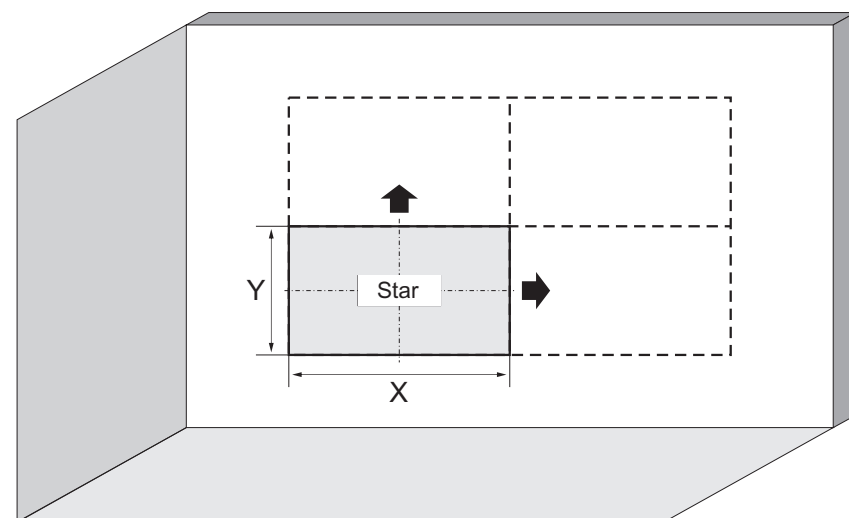
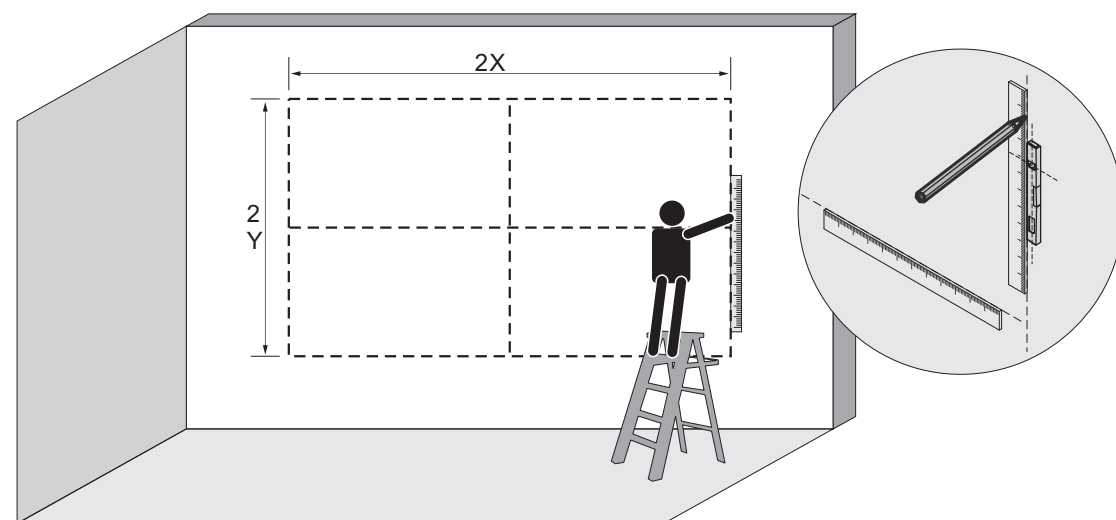
Package W



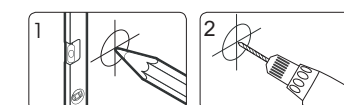
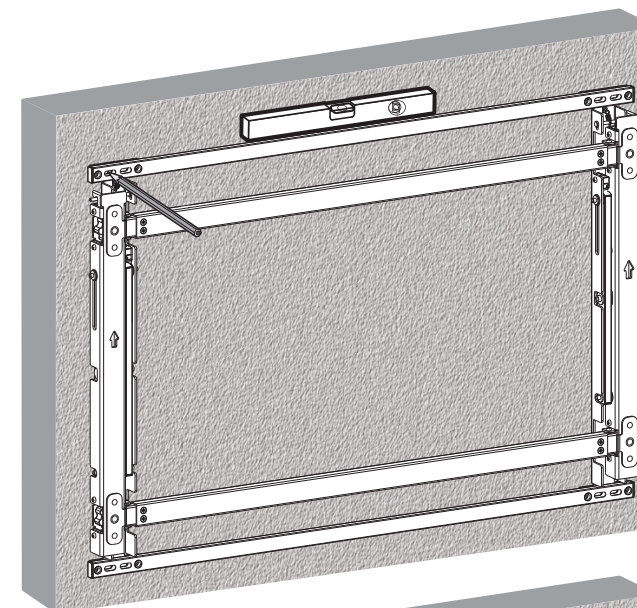
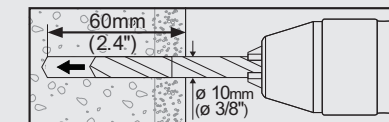
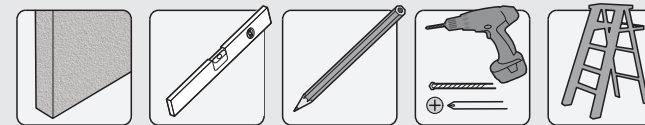
1. Plan the Mounting Placement



X=length of display Y=Height of display

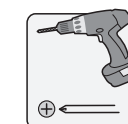
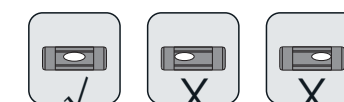


2. Masonry and Concrete Wall Mounting

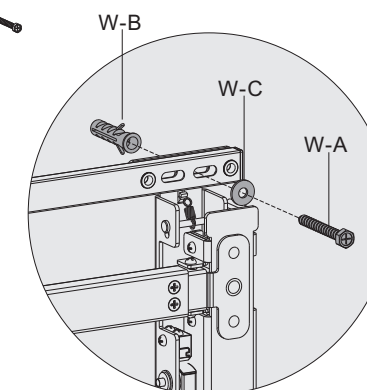
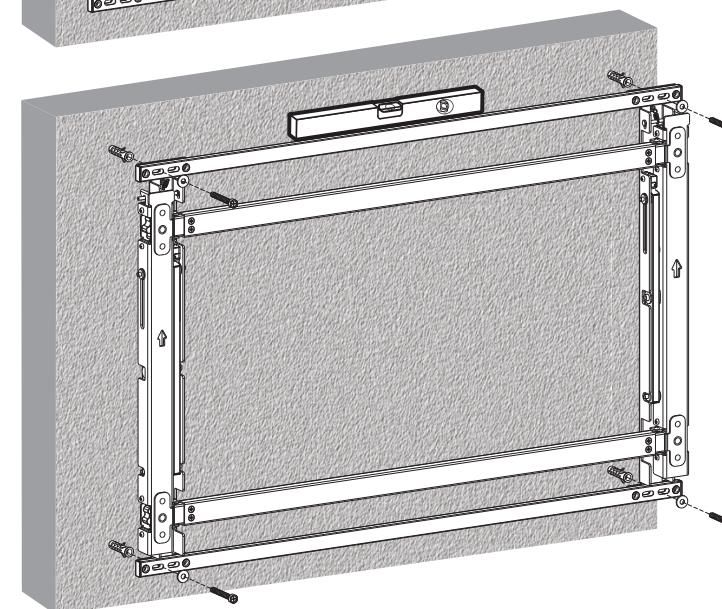


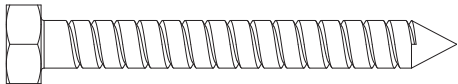
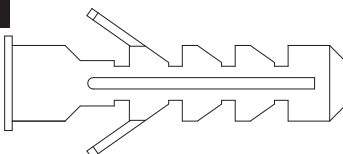

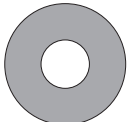
Mark the exact location of mounting holes

Drill pilot holes



Screw the wall plate onto the wall

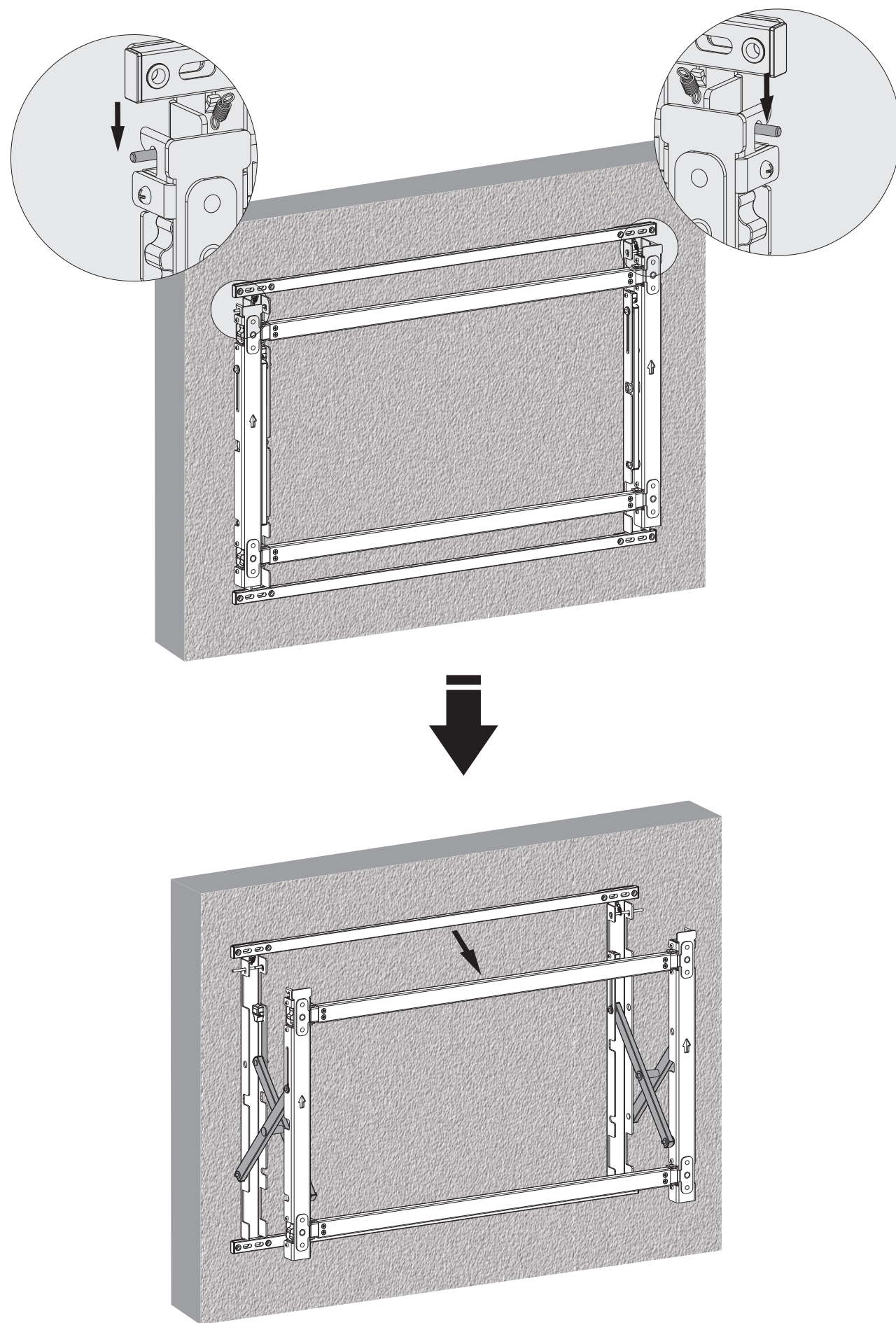


W-A		W-B		1:1
				
W-C				1:1
				

! WARNING

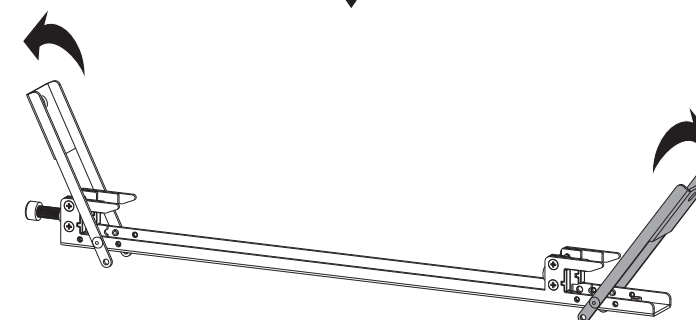
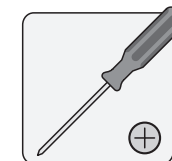
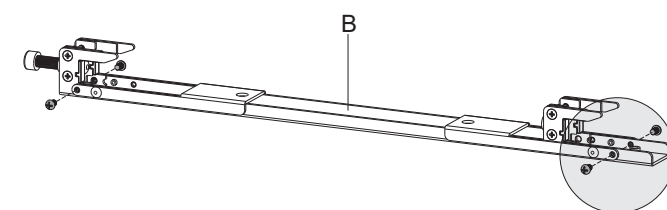
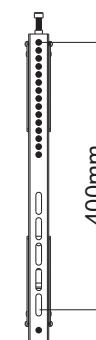
Installers must verify that the supporting surface will safely support the combined weight of the equipment and all attached hardware and components.

3. Extend the Mounting Arm

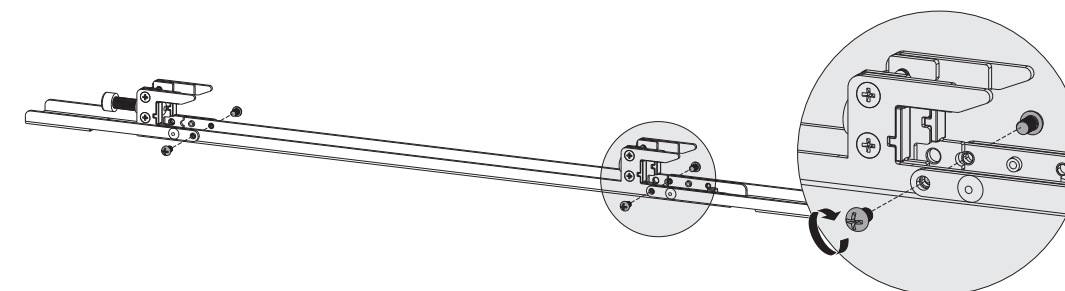
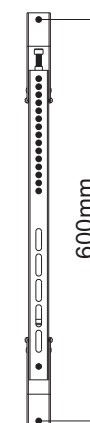


4. Arrange the Adapter Brackets

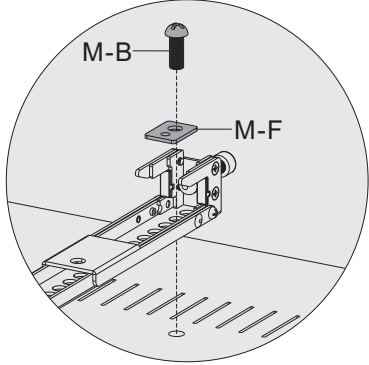
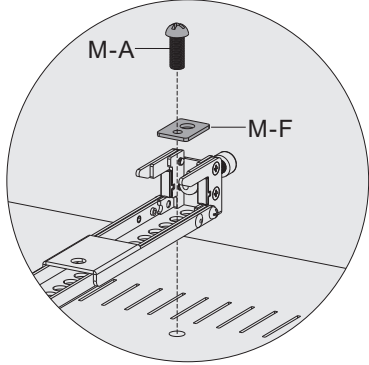
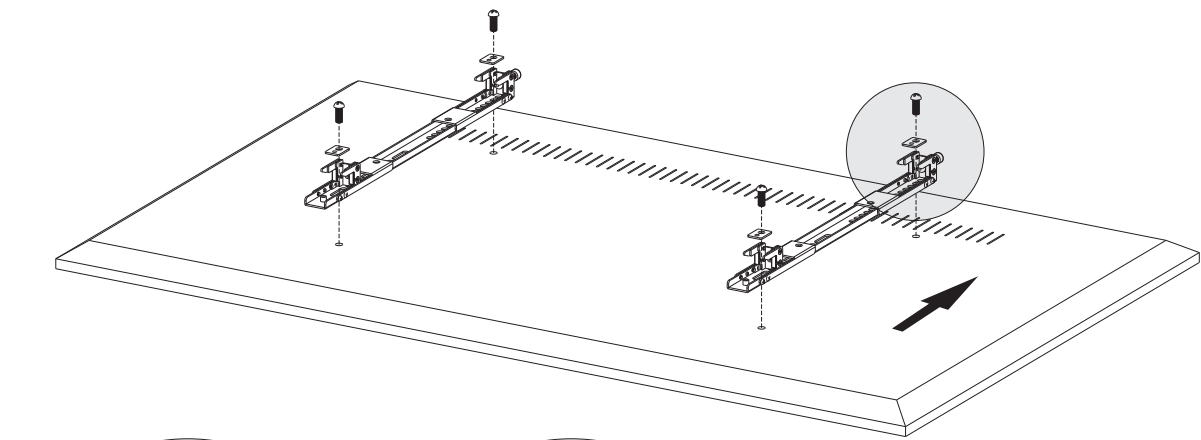
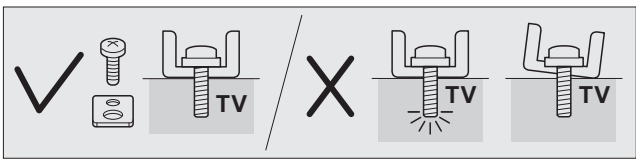
For Landscape Mounting

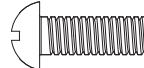

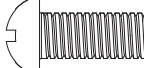


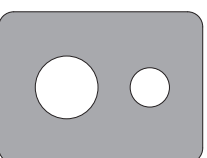


For Portrait Mounting

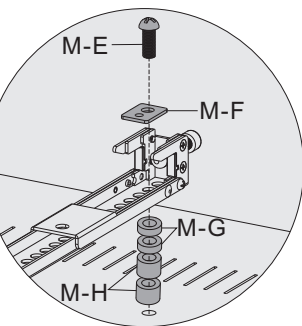
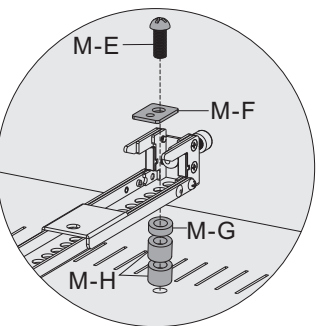
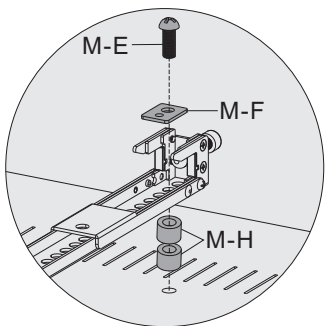
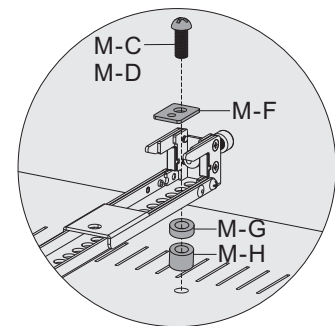
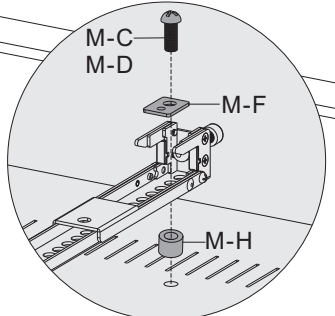
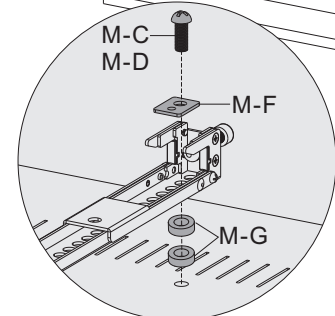
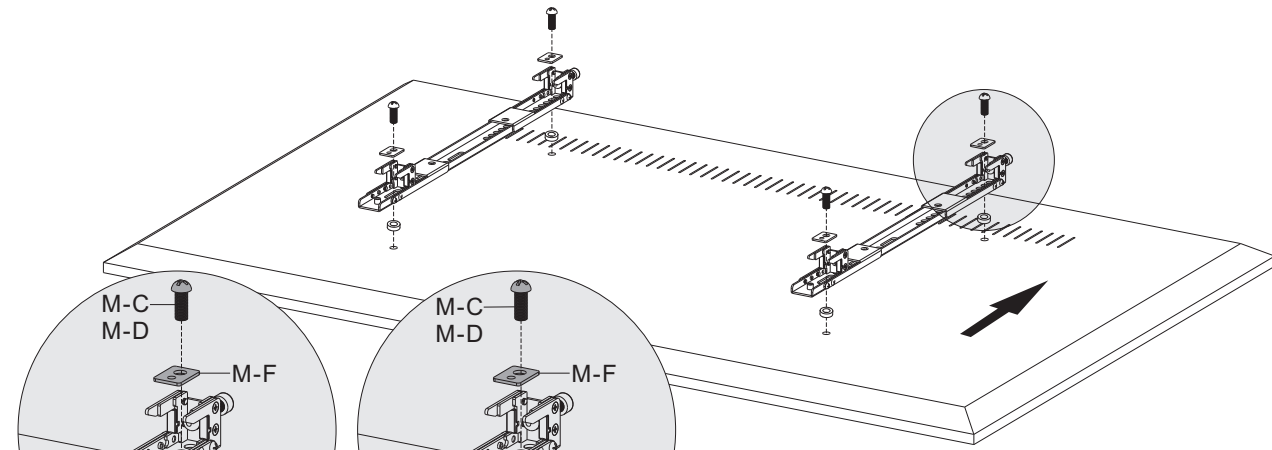
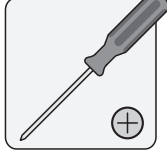
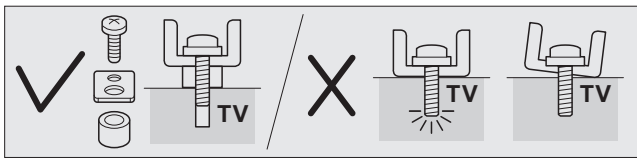




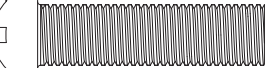


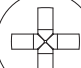

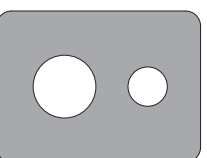

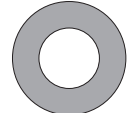

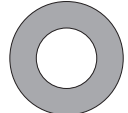
5a. Flat Back Screen Installation



M-A 		M-B 	
M-F 			

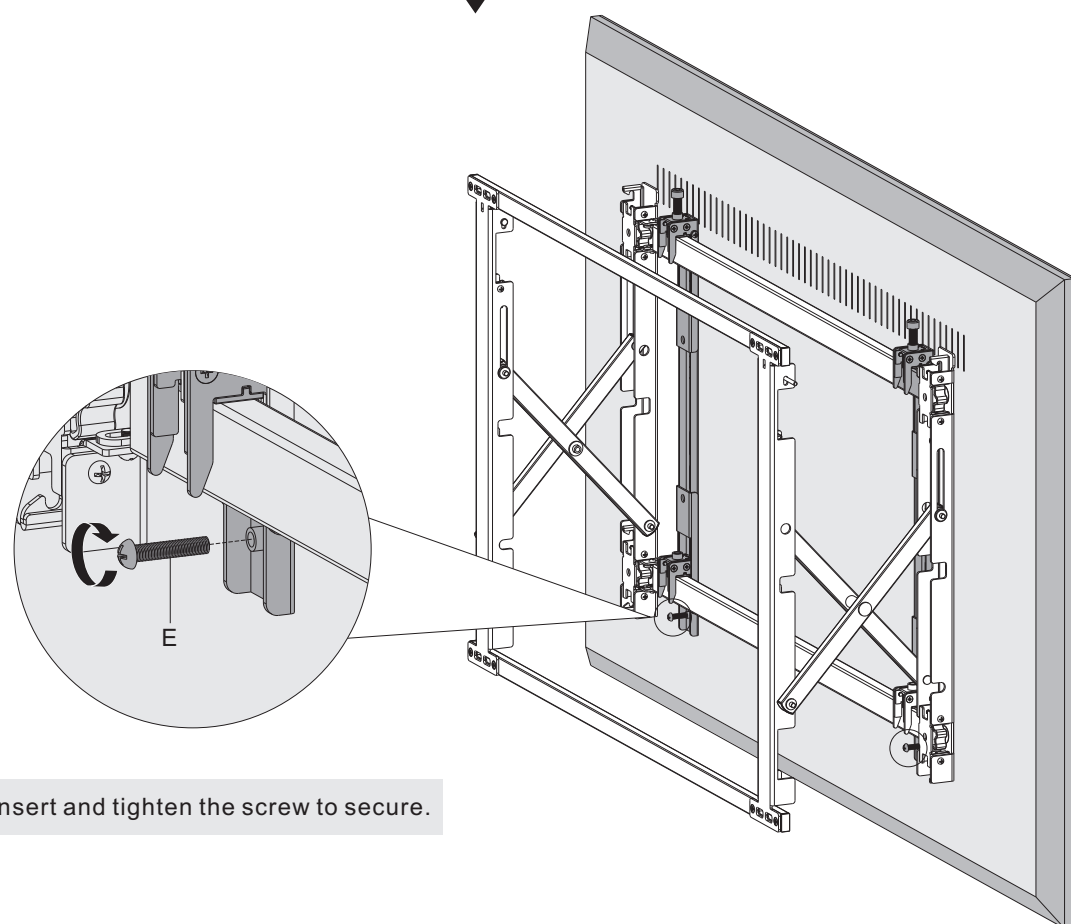
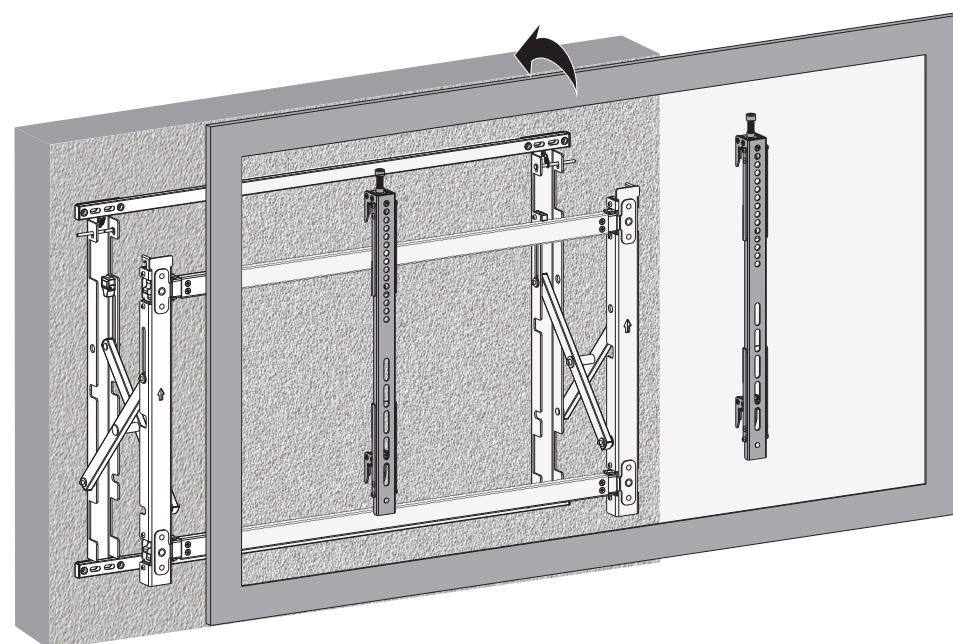
5b. Non-Standard Back Screen Installation



M-C 		M-D 	
M-E 		M-F 	
M-G 		M-H 	

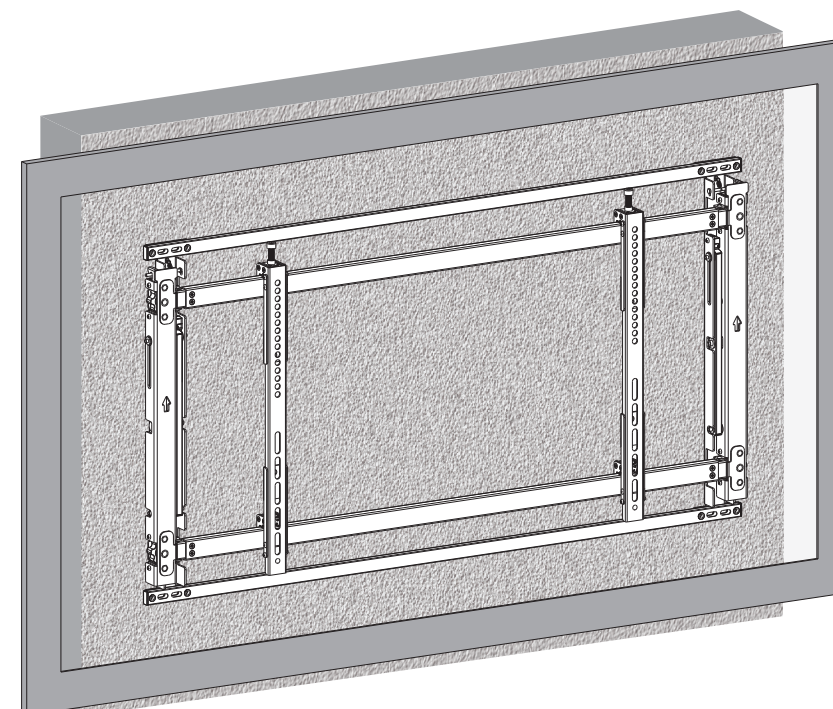
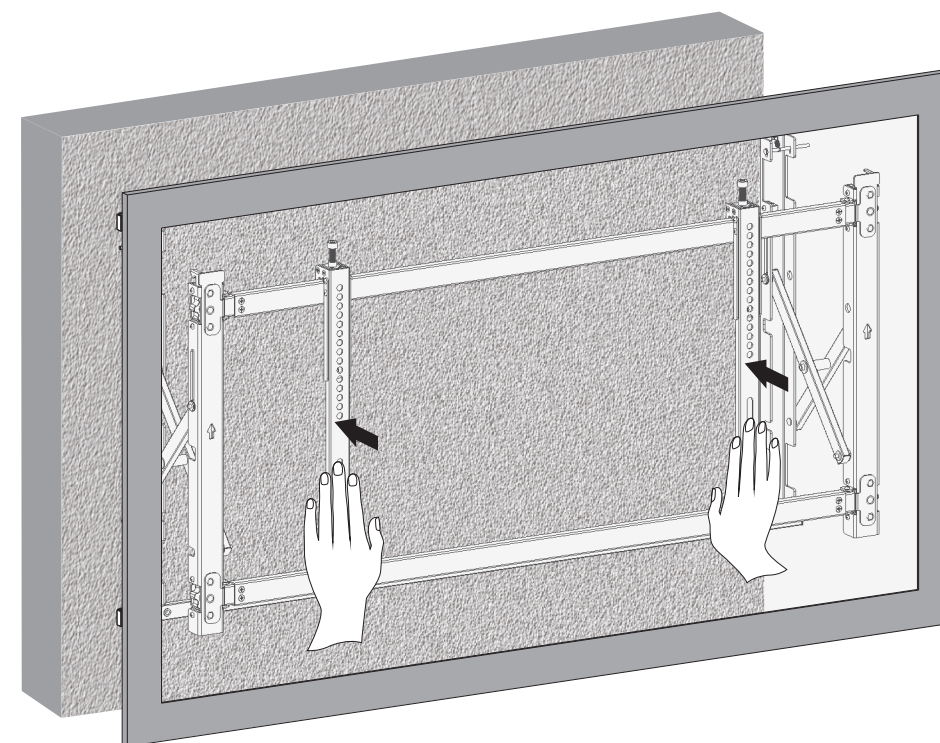
- Choose the appropriate screws, washers and spacers (if necessary) according to the type of screen.
- Center the adapter brackets on the back of the display as shown, and screw the brackets onto the display, being sure to not over-tighten.

6. Hook the Display onto the Wall Plate



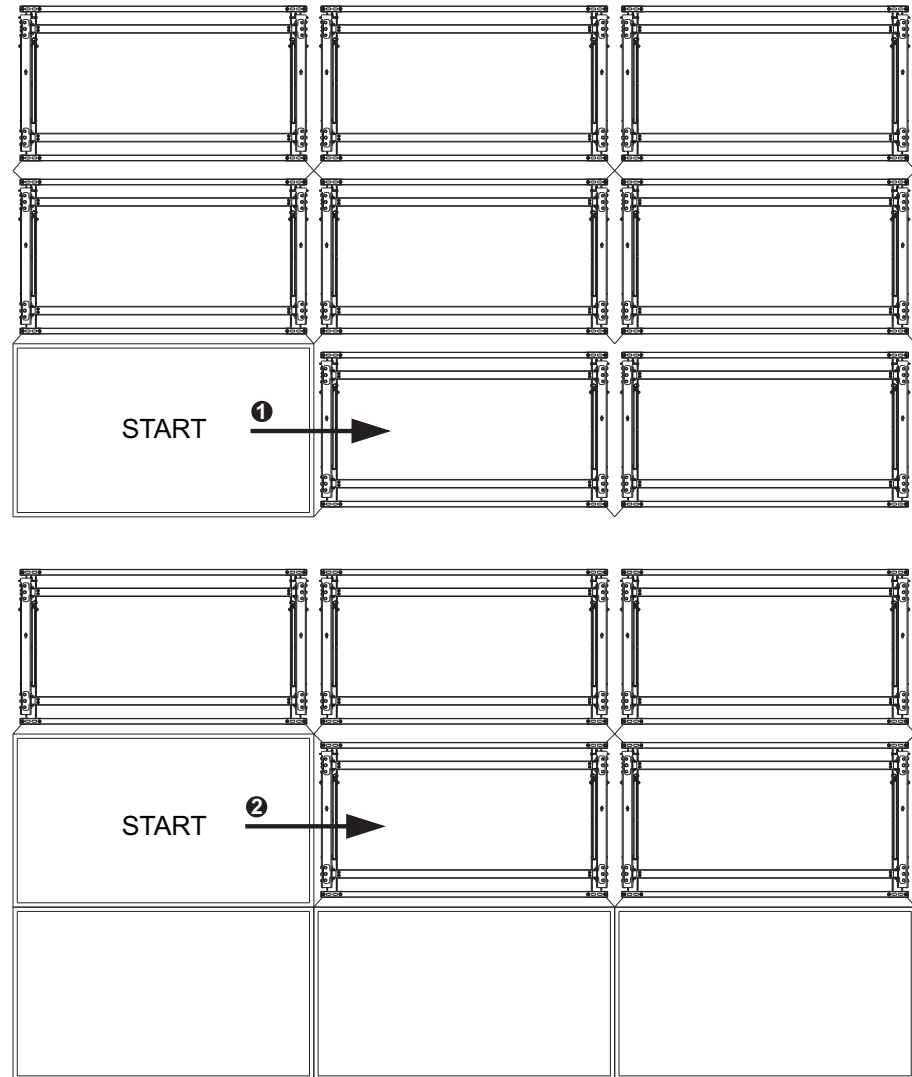
Insert and tighten the screw to secure.

7. Push the Screen Back



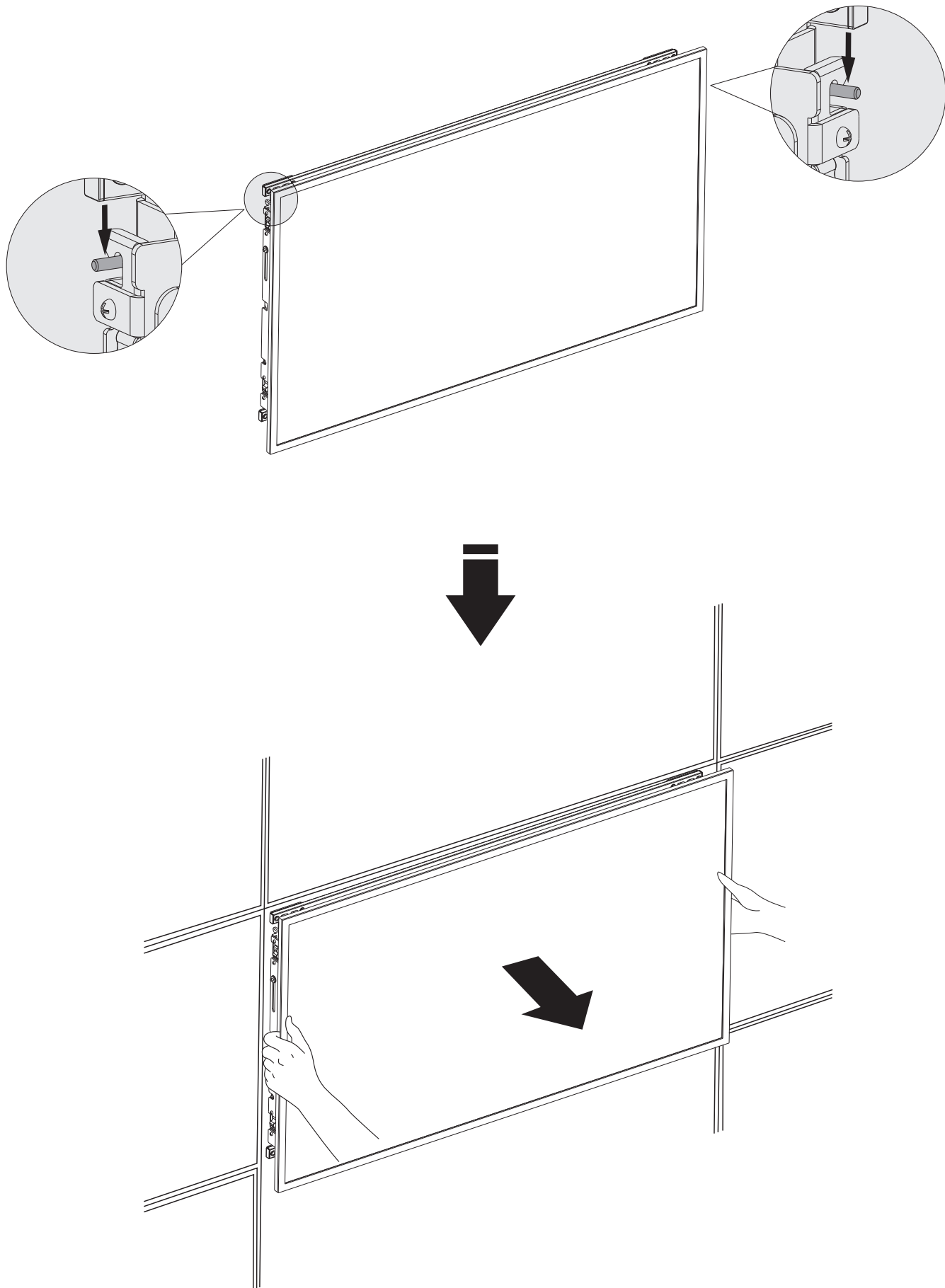
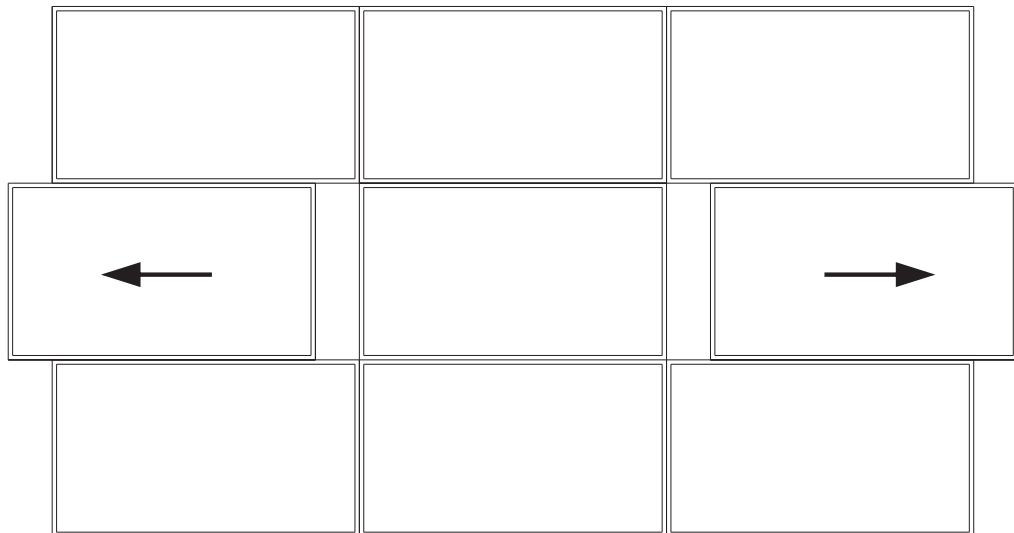
8. Video Wall Installation

Note: Please start from the left at bottom.

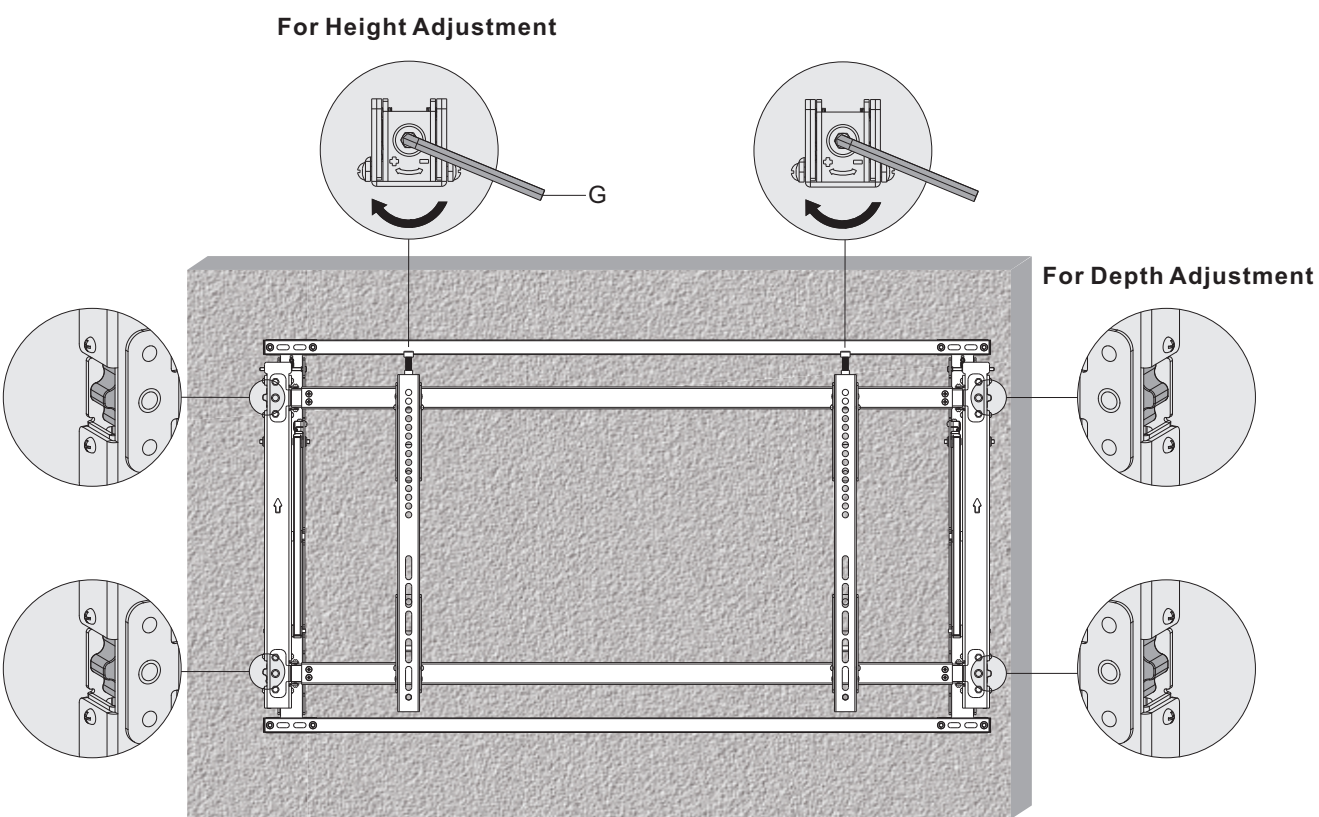
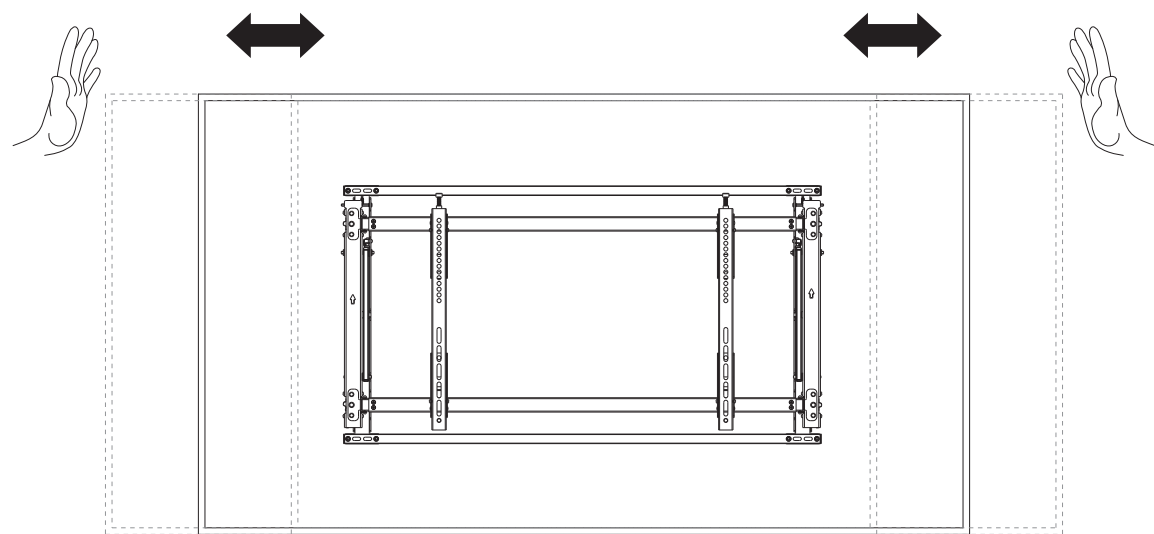


9. Remove the Screens

Slide the screens on both sides, then unlock and extend the screen that you're going to remove.

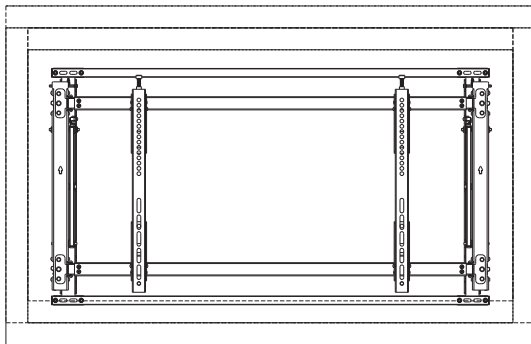
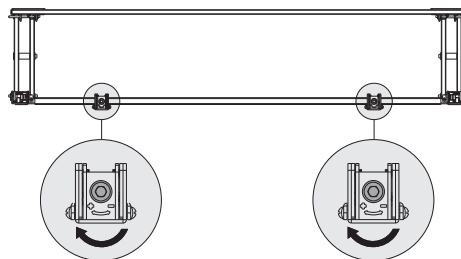


10. Adjustment

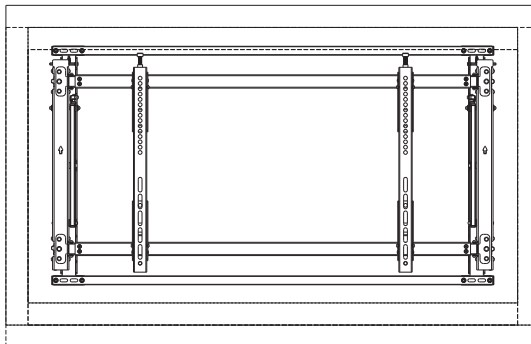
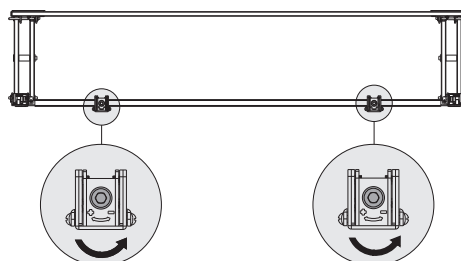


Height adjustment

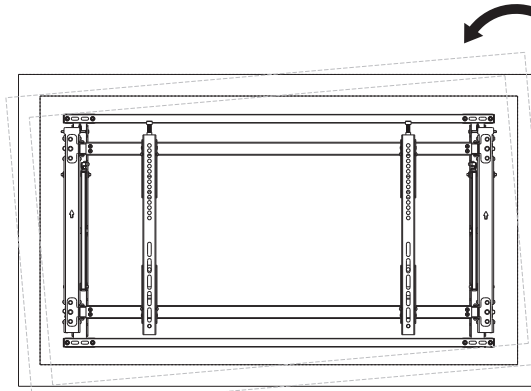
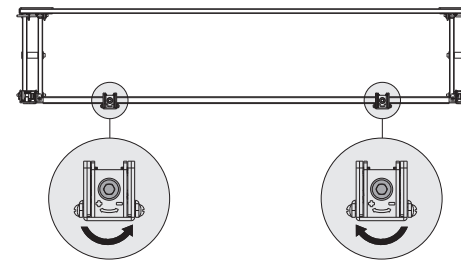
1



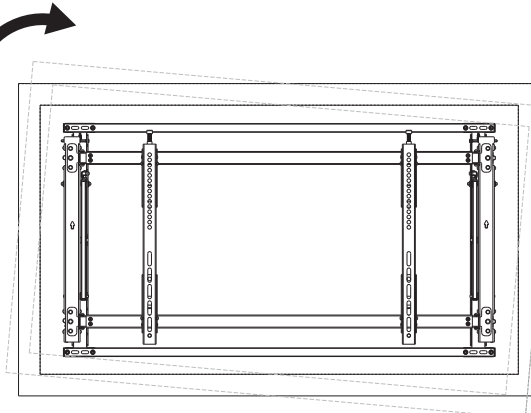
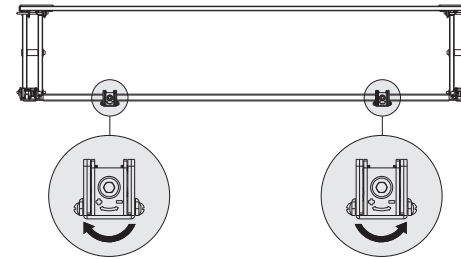
2



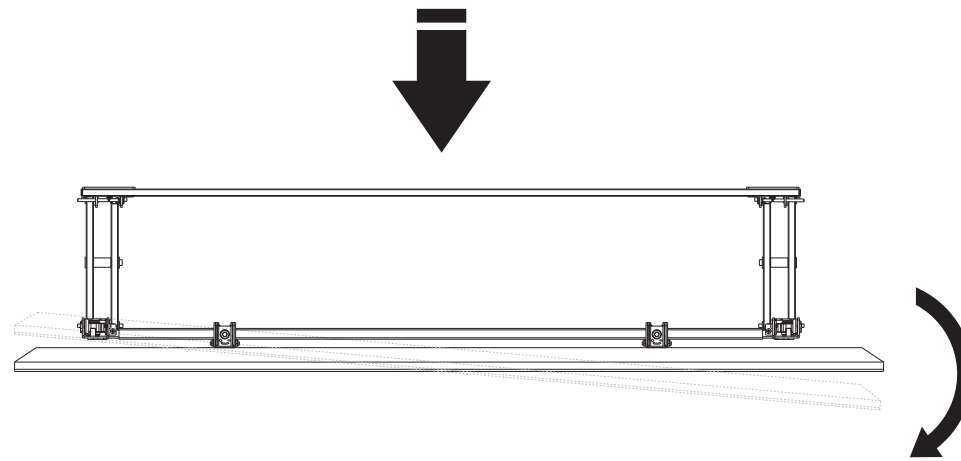
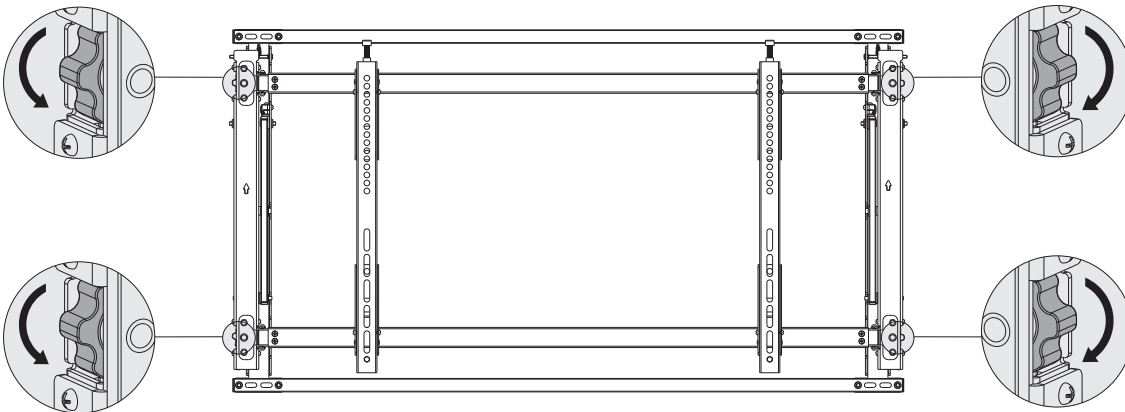
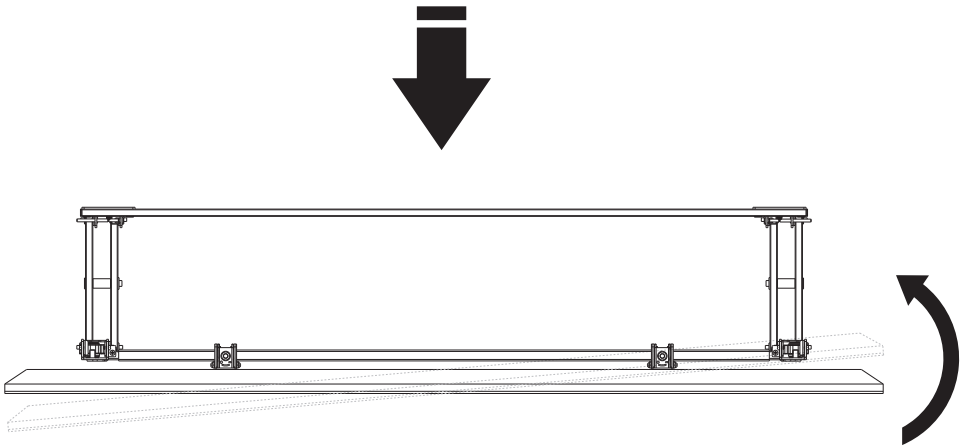
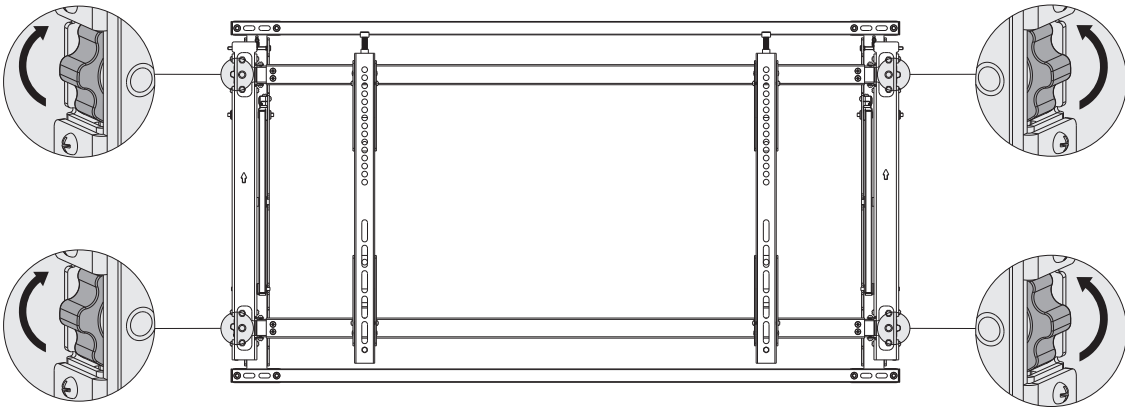
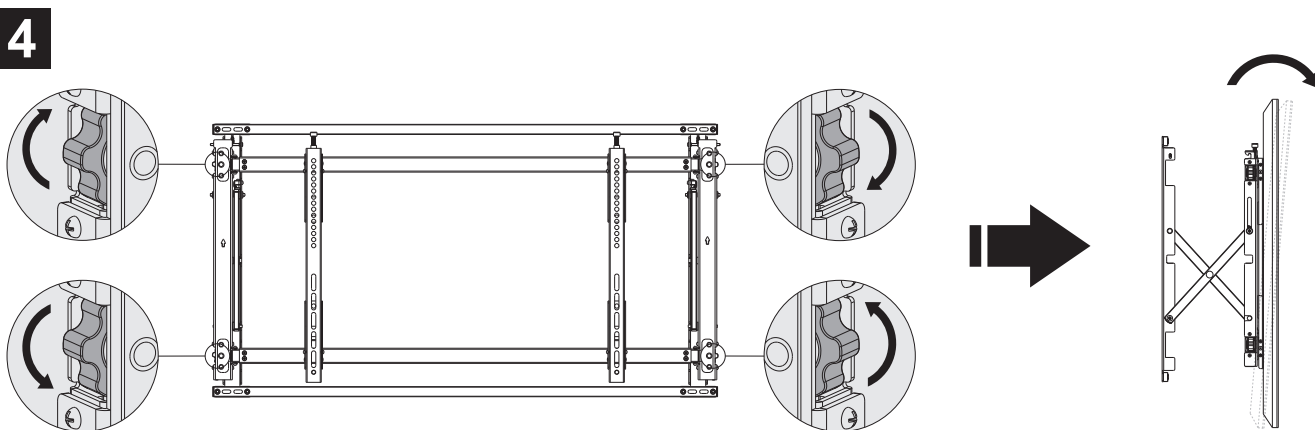
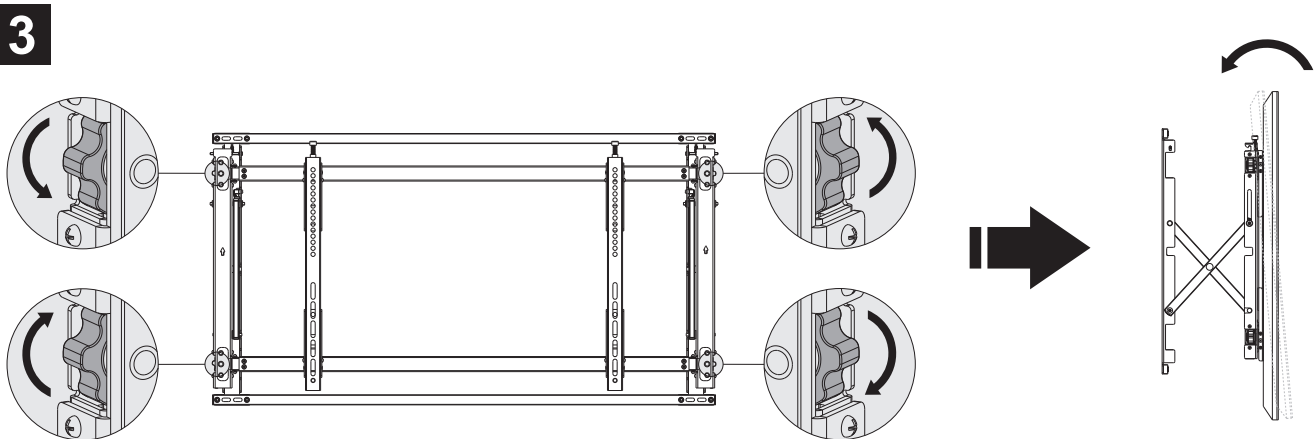
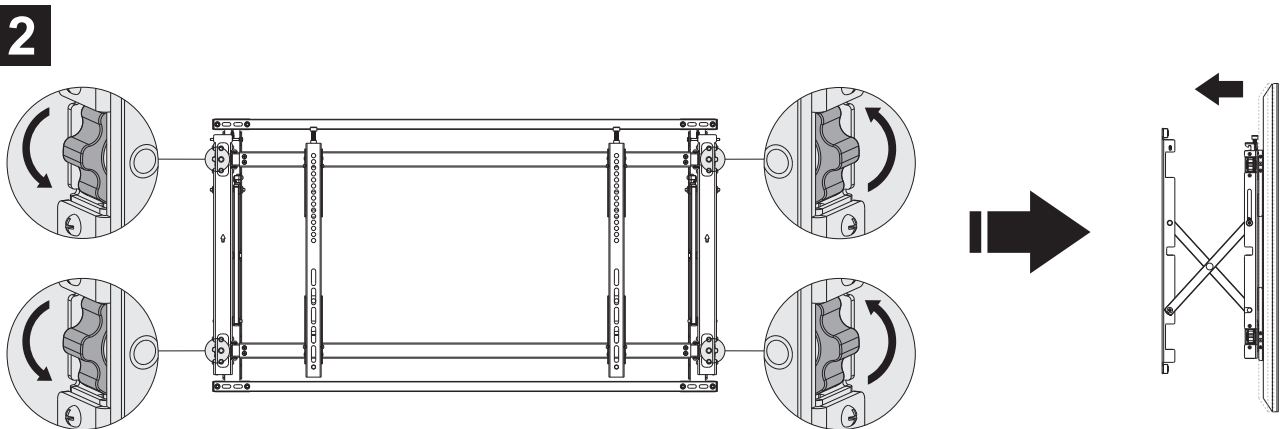
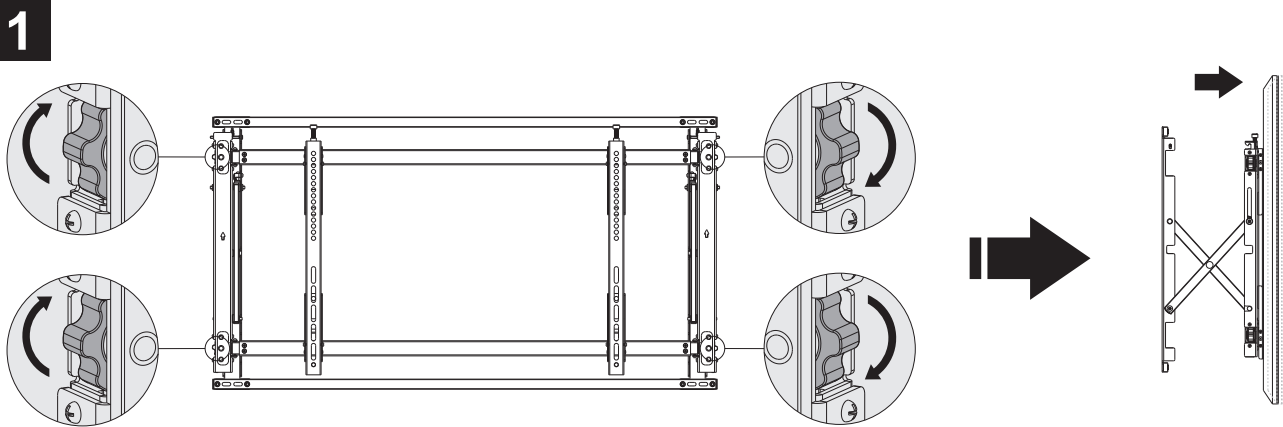
3



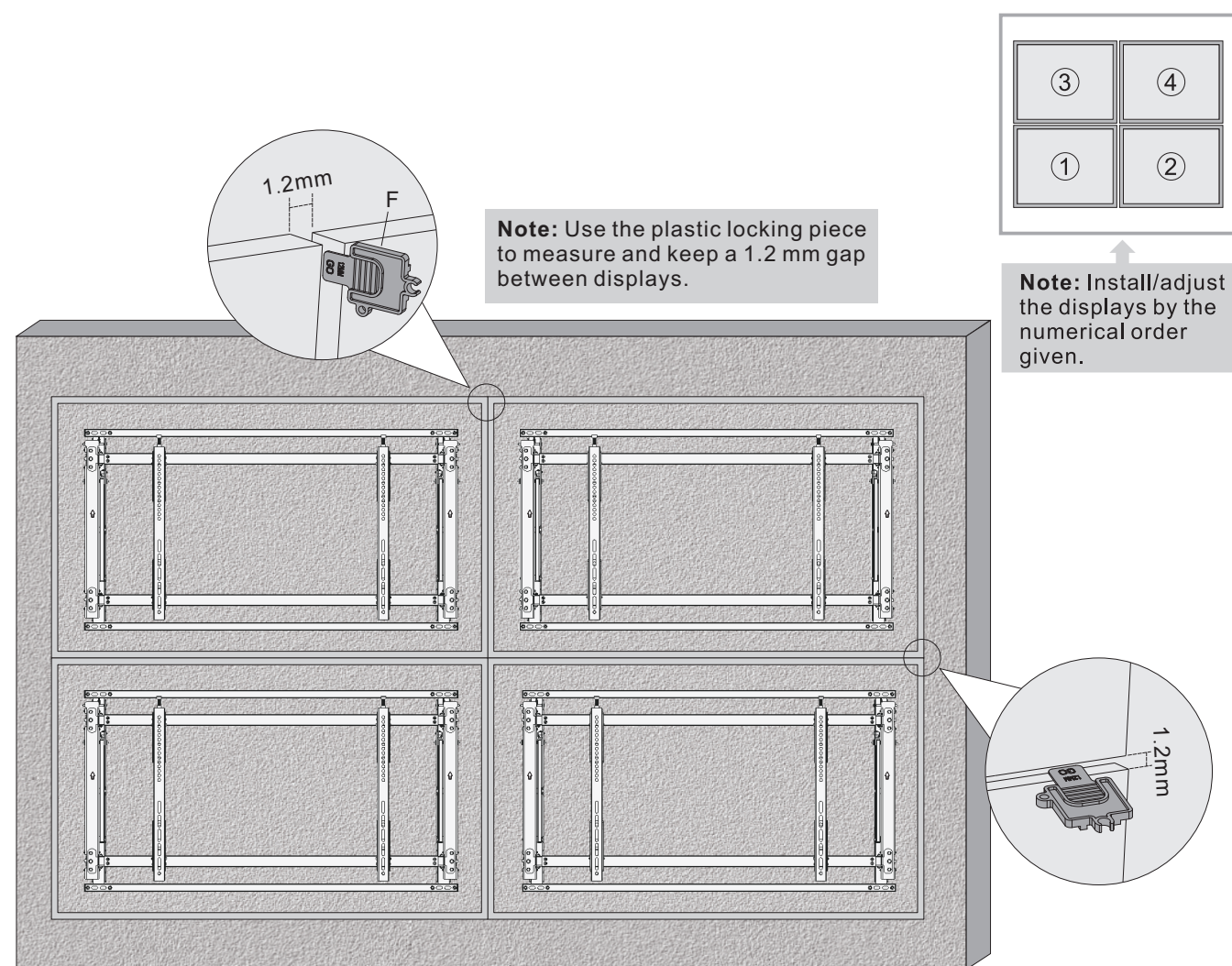
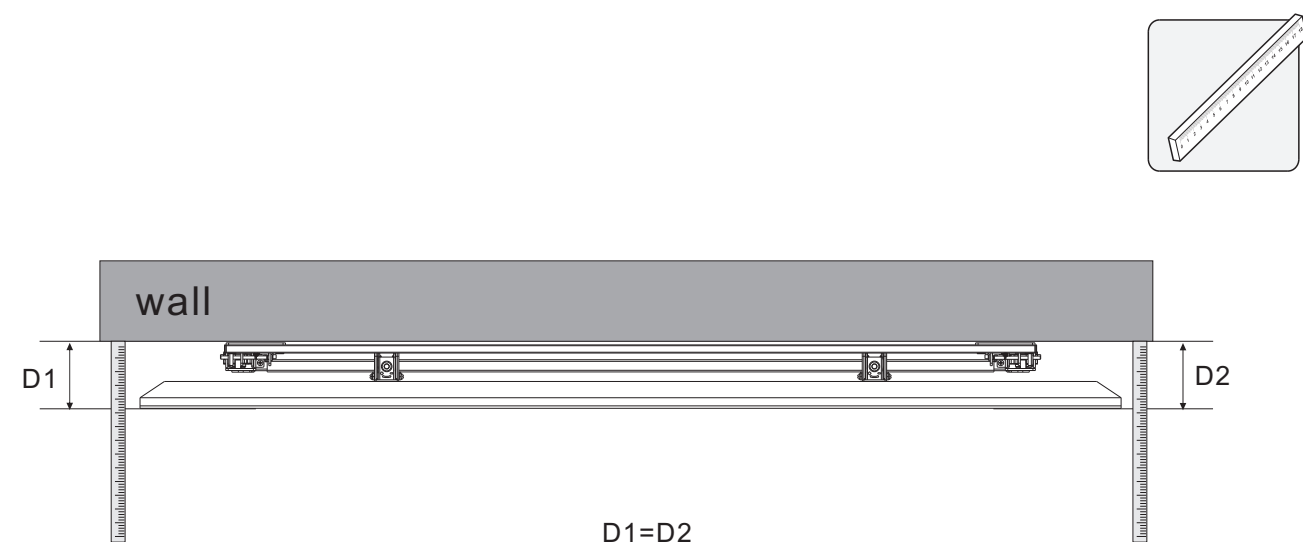
4



Depth Adjustment



11. Level the Displays



MAINTENANCE:
Check that the product is secure and safe to use at regular intervals (at least every three months).

12. For Portrait Mounting: Reassemble the Wall Plate

